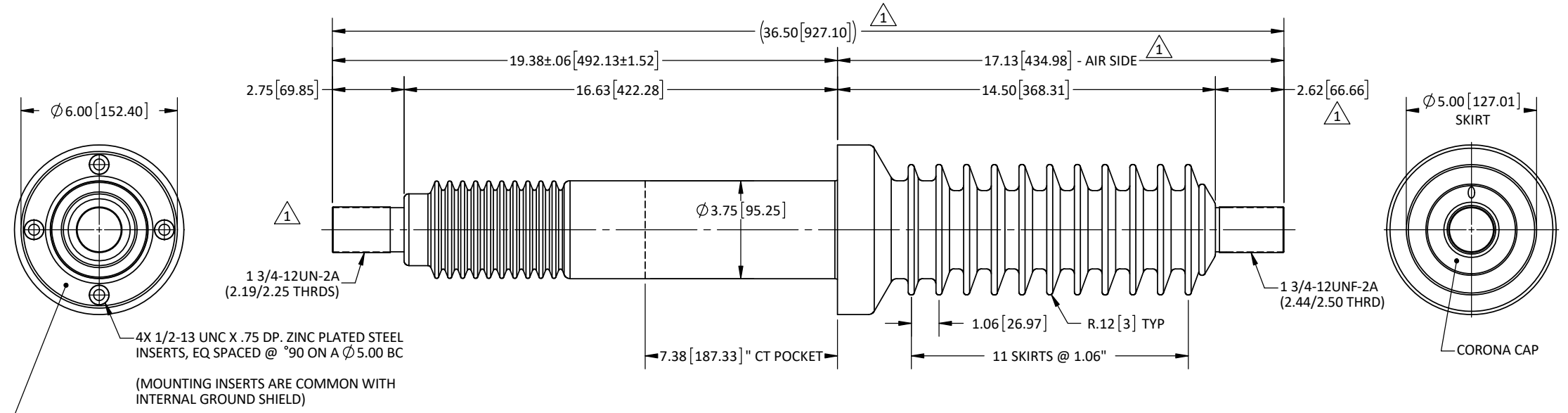


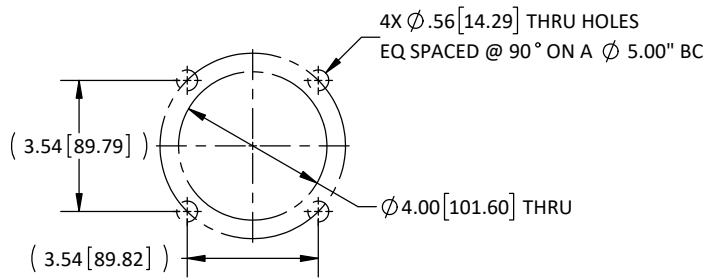
REVISIONS					
REV.	DATE	ECN #	DESCRIPTION	BY	APP'D
1	5/31/2017	HJ17-133	CHG'D DIM, WAS 36.44-TO-36.50 REF, WAS 17.06-TO-17.13, WAS 2.56-TO-2.62. REM \varnothing 1.75 DIM	TJF	BLB



\varnothing 6.00 OD X \varnothing 3.75 ID X .09 DP
GASKET RETAINING GROOVE

4X 1/2-13 UNC X .75 DP. ZINC PLATED STEEL
INSERTS, EQ SPACED @ 90° ON A \varnothing 5.00 BC

(MOUNTING INSERTS ARE COMMON WITH
INTERNAL GROUND SHIELD)



RECOMMENDED MOUNTING DETAIL

NOTES:
1. ALL CONTACT SURFACES TO BE CLEAN & FREE FROM FLASH

MATERIAL:
1. E07 - CYCLOALIPHATIC EPOXY (U.V. EXPOSED), COLOR: GREY
2. HD ETP COPPER, C11000, SILVER OR TIN PLATED
3. ANODIZED ALUMINUM NAMEPLATE

SPECIFICATIONS:
1. MANUFACTURED IN ACCORDANCE WITHIEC 137-1995, CAN/CSA-C88.1-96, IEEE C57.19.01-1991
2. RATED VOLTAGE38kV
3. POWER FREQUENCY WITHSTAND80kV
4. BASIC IMPULSE LEVEL150kV
5. NOMINAL CURRENT RATING2000 AMPS
6. CREEP DISTANCE33"/838 mm (24 mm/kV)
7. TEMPERATURE CLASSIFICATION-50 °C TO +105 °C
8. APPROXIMATE WEIGHT49 LBS

PROPRIETARY AND CONFIDENTIAL
THE INFORMATION CONTAINED IN THIS DRAWING IS THE SOLE PROPERTY OF H-J INTERNATIONAL, INC. ANY REPRODUCTION IN PART OR AS A WHOLE WITHOUT THE WRITTEN PERMISSION OF H-J INTERNATIONAL, INC. IS STRICTLY PROHIBITED.

BREAK ALL SHARPS UNLESS OTHERWISE NOTED

TOLERANCES (EXCEPT AS NOTED)	
ONE PLACE MM	±1.50
TWO PLACE MM	±0.75
TWO PLACE DEC.	±0.060
THREE PLACE DEC.	±0.030
FRACTIONS	± 1/16"
ANGLES	2°



APPROVED BY	DB	DATE	8-30-03
CHECKED BY	RM	DATE	8-30-03
DRAWN BY	DB	DATE	8-30-03
TOOL NO.	T20-450-1		
PRODUCT GRP.	2000 SERIES		

H-J INTERNATIONAL, INC.
3010 HIGH RIDGE BLVD. HIGH RIDGE, MO. 63049 USA
PHONE 1-636-677-3421 FAX 1-636-376-1915

POWER APPARATUS BUSHING

38kV / 2000A

DRAWING NO. **20-450-101**

SCALE 1:4 SIZE B REV. 1 SHEET 1 OF 1